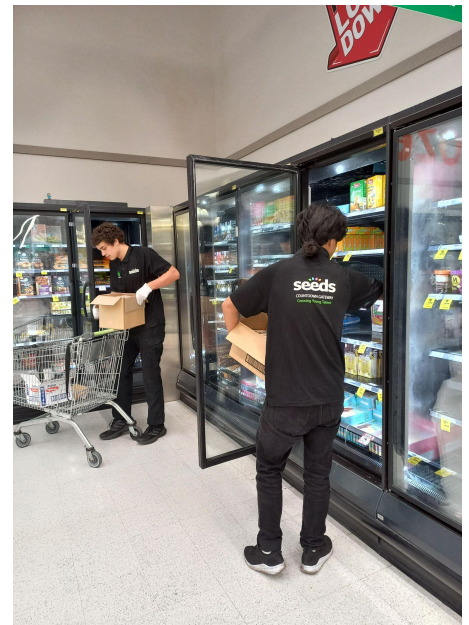




As part of Otumoetai College's Gateway programme, Riley, Xavier and Dylan completed a two-day workshop learning about food safety, safe work practices, personal presentation, product knowledge and teamwork. The students will now complete five days of work experience in Countdown, Bureta, one day per week, replenishing goods, dealing with customers and gaining real experience in a real workplace. All three students were working together restocking the freezers when we visited. Dylan was helping a customer find a product. They were positive about the experience and enjoyed learning and working in the retail environment.



We encourage all students to partake in some form of Work experience as it can be an incredibly important opportunity for career pathway planning. Work experience develops valuable skills such as time management, communication, teamwork, problem-solving, and customer service, which can be useful in future endeavours. We have noticed that all students who are part of the Gateway programme demonstrate increased confidence and independence. It also has helped with their future pathway decision-making by exposing them to different career options and help them understand what they do and do not enjoy doing. This can help them make more informed decisions about their future careers.

If you would like to host an Otumoetai College student at your workplace please feel free to contact Emma Webb - Gateway Placement Coordinator - ewebb@otc.school.nz or if your student is interested in the Gateway Programme for 2024 please contact Eloise Stephen - Pathways Manager - estephen@otc.school.nz